



**PIYE**

**An Australian-Kenyan Partnership**  
*Creating Networks, Strengthening Partnerships, Empowering Communities*

# ANNUAL REPORT 2006 – 2009



**Piye Incorporated**

GPO BOX Q952

QVB - SYDNEY, NSW, Australia 1234

Telephone: +61(0) 450 609 410

Email: [info@piye.org.au](mailto:info@piye.org.au)

Web: [www.piye.org.au](http://www.piye.org.au)

## ABOUT PIYE

Piye is a non-government organisation working in Kenya, one community at a time, to back and support each community as they undertake work to break the cycle of ill health, poverty and hunger.

Our organisation is based on relationships - we work community by community, person to person, always through building relationship and linking Australians to Kenyan communities. We work with the community to make the changes they want to make to realise their hopes and dreams.

## VISION

Strong, healthy, prosperous Kenyan communities, taking ownership of their destiny.

## MISSION

Create networks, strengthen partnerships and empower communities.

## STRATEGIC DIRECTIVES

Strategic Directive 1: Support sustainable development programs.

Strategic Directive 2: Establish strong partnerships.

Strategic Directive 3: Develop the strength and capacity of our young, dynamic, innovative 'can-do' organisation.

## FOUNDERS' REPORT

It is with great pleasure that we write our first Piye Annual Report. Looking back, it seems as though it was a long time ago when we began consultation with our partners, the community of Ongeche Village, in Kenya in 2006. Since that time, we have registered the organisation in Australia and New Zealand and began a series of public talks to raise awareness of the issues faced by our partner group. We have witnessed the generosity of people in Australia and New Zealand through their donations and volunteer activities.

We have also witnessed the tenacity of our partner group in Kenya as they shape their destiny by actively participating in development, fundraising and implementation of programs.

Since 2006, we have donated books to Ongeche Primary School, sponsored eight students, donated chairs and a tent, developed and implemented a goat program and built a science laboratory at Ongeche High School.

We are proud to announce that Piye has developed its first Strategic Plan 2010-2015 which focuses on supporting the implementation of sustainable development projects identified by our partners, establishing strong partnerships, and developing the strength of our young, dynamic, innovation, organisation.

We have achieved an incredible amount since 2006. We take this opportunity to thank everyone who has been involved with Piye: our 30 members, 90 volunteers, advisors, rotarians, previous and current board members and our partner group in Kenya. It has been a pleasure journeying with you.

God bless you.



Ms Sheila Matete-Owiti



Dr Francis Matete



Mrs Naomi Matete

## TREASURER'S REPORT

This financial report covers the period 1 July 2008 to 30 June 2009.

In comparison to the previous year's financials, Piye had a relatively good year. Cash at bank rose from \$140.05 to \$ 2,340.24. The increase was as a result of new members joining, donations and fundraising activities. **Total income for the financial year 2008-2009 was \$8,883.79.**

We managed to keep our expenses low, except for initial set up costs or asset acquisition, the majority of which are non-recurrent expenses. Piye has benefited generously from the direct financial support of many members, who paid the set up costs.

The statement of financial position and performance are included on pages 6 and 7 of this report. The profit and loss statement as well as the balance sheet were prepared by Val Longmire.

## INDEPENDENT AUDITOR'S REPORT

Meylia Accounting Public Accountant & Business Consultant  
ABN 46 103 449 985  
Suite 326 / 401 Sussex Street, Sydney, NSW, 2000

To Piye Incorporated (ABN: 47 891 250 311)

### SCOPE

We have audited the Financial Report, being the Income & Expenditure Statement, Balance Sheet, and Bank Statements for the year ended 30 June 2009. The Accountants are responsible for the preparation of the financial report.

I have conducted an independent audit of this financial report in order to express an opinion on them to the members of Piye Incorporated. Our audit has been conducted in accordance with Australian Auditing Standards to provide reasonable assurance as to whether the financial report is free of material misstatement. My procedures included examination, on a test basis, of evidence supporting the amounts and other disclosures in the financial report, and the evaluation of the accounting policies and significant accounting estimates. These procedures included have been undertaken to form an opinion whether, in all material respects, the financial report is presented fairly in accordance with Accounting Standards and other mandatory professional reporting requirements so as to present a view which is consistent with my understanding of the company's financial position and the results of its operations. The audit opinion expressed in the report has been formed on the above basis.

### AUDITORS OPINION

In my opinion, the financial report of Piye Incorporated presents fairly in accordance with applicable Accounting Standards and other mandatory professional reporting requirements the financial position of Piye Incorporated as at 30 June 2009 and the results of its operations for the year ended.

Sydney, 26 March 2010  
Meylia Setyawati  
Accountant



**PIYE INCORPORATED**  
**ABN 47 891 250 311**

**Detailed Profit and Loss Statement**  
**For the year ended 30 June 2009**

**INCOME**

Interest Received		
Commonwealth Bank	\$	0.56
Other Interest		
Total Interest		\$ 0.56
Memberships & Fees		
Annual Membership - Individuals	\$	1,100.00
Annual Membership - Corporate	\$	-
Initial Subscription Fees	\$	440.00
Total Membership Funds		\$ 1,540.00
Donations		
Expense Payment Donations	\$	2.50
Other Donations	\$	5,010.78
Total Donations		\$ 5,013.28
Fundraising		
Chocolate Sales	\$	1,129.95
Luncheon Funds	\$	1,200.00
Total Fundraising Proceeds		\$ 2,329.95
<b>Total Income</b>	<b>\$</b>	<b>8,883.79</b>

**EXPENSES**

Annual Membership / Subscriptions		
Department of Fair Trading		\$ 72.00
Bank Fees		\$ 2.98
Business Cards		\$ 150.00
Fundraising Costs		
Chocolates at Cost	\$	408.02
Lunch - Cost	\$	807.30
Total Fundraising Costs		\$ 1,215.32
PO Box Rental		\$ 174.00
Stationery & Photocopying		\$ 2.50
Website Maintenance		\$ 106.80
<b>Total Expenses</b>	<b>\$</b>	<b>1,723.60</b>

**NET PROFIT / LOSS**

**\$ 7,160.19**

**PIYE INCORPORATED**  
**ABN 47 891 250 311**

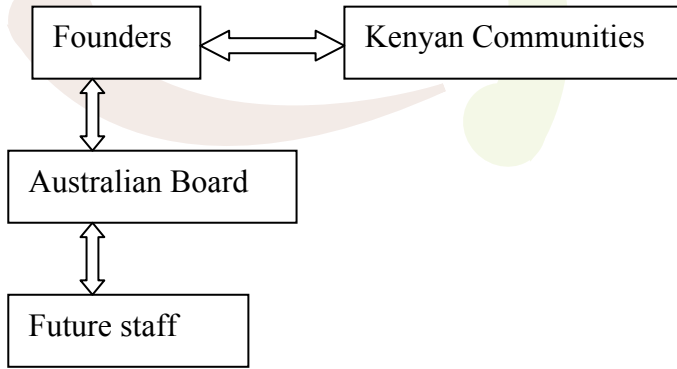
**Balance Sheet As At 30 June 2009**

	At 30 June 2009	At 30 June 2008
<b>ASSET</b>		
Cash at Bank		
Commonwealth Bank	\$ 2,340.24	\$ 140.05
Plant & Equipment	\$ 460.00	
Website Setup	\$ 1,300.00	\$ -
Intangibles		
Initial Set up Costs	\$ 103.00	\$ 103.00
Projects Funded		
Goats Project	\$ 3,200.00	
<b>Total Assets</b>	<b>\$ 7,403.24</b>	<b>\$ 243.05</b>
<b>LIABILITIES</b>		
No Liabilities as at balance date	\$ -	\$ -
<b>Total Liabilities</b>	<b>\$ -</b>	<b>\$ -</b>
<b>NET ASSETS</b>	<b>\$ 7,403.24</b>	<b>\$ 243.05</b>
<b>EQUITY</b>		
Retained profits	\$ 7,160.19	\$ 243.05
Prior Year Profits Brought Forward	\$ 243.05	\$ -
<b>TOTAL NET EQUITY / (DEFICIENCY)</b>	<b>\$ 7,403.24</b>	<b>\$ 243.05</b>

BALANCE SHEET 2008 – 2009

## PIYE GOVERNANCE STRUCTURE

Piye New Zealand and Piye Australia founders have recently decided to work as one organisation – with one Board of Governors based in Sydney. There are three founders, who act as the Kenyan community liaison. Founders identify communities in Kenya in need of support, and facilitate culturally appropriate relationships. Below is the current organisational structure.



We would like to thank the following individuals for their commitment to Piye over the past three years.

New Zealand: Phoebe Kisubi, Nyambega Ochieng, Joseph Ochieng, Pat Wood, Ian Garfitt, Sam White, Lynn Wood, Naomi Matete and Francis Matete.

Australia: Jonathan Longmire, Val Longmire, Pauline Muscat, Jessica Shugart, Sarah Potter, Jacqui Grey, Nathan Louie, Wycliffe Owiti, Sheila Matete-Owiti, Christine Saleh, Meylia Setyawati, David Guillaume, Kerrie Guillaume and Peter Edington.

Dr. Matete planting a tree with the Ongeche Community Elders



## PIYE – ONGECHE COMMUNITY LINKAGE

Piye is currently supporting the Ongeche community located in Nyanza Province, western Kenya. Piye founders have known the needs of the Ongeche people for many years. In 2006, the founders facilitated a community meeting and the Ongeche Primary Health Care and the Community Development Group was formed. This group is registered by the Government of Kenya and is also known as the Ongeche Group. The group consists of a chairperson, secretary, assistant secretary, treasurer and members. The group holds the responsibility of managing joint Piye-Ongeche projects through a number of sub-committees. The Ongeche community elders and Piye founders participated in a traditional tree planting ceremony that symbolises the new partnership.



## PERFORMANCE OF OUR KENYAN PROJECTS

With support from our members, donors and volunteers, Piye has implemented a number of projects since 2006. Piye is supporting the Ongeche Community in Kenya with the aim of implementing programs in other communities over time. All Piye projects are developed following a community-based needs assessment process. We ensure that projects are community-owned and community-driven.

### Construction of Science Laboratory

Each year, the fourth year Ongeche High School students sit the National Kenya Certificate of Secondary Education Exam. Ongeche students, however, have never been able to conduct any laboratory experiments in biology, chemistry and physics. This greatly disadvantages these students, and they are unable to compete successfully at the national level.

In 2009, Piye donated funds towards the construction of a science laboratory at the Ongeche High School, courtesy of funds raised in 2006-2007 in collaboration with the Rotary Club of Corrimal and the Rotary Australia World Community Service (RAWCS).

In July 2009, Dr Francis Matete (Piye founder) travelled to Kenya to oversee the development of the project. The local chief, local Anglican Church vicar, the chairman, the executive committee of the Ongeche Group and community members attended a traditional ground breaking ceremony to welcome the project. The members of the Ongeche Group and the board members of Ongeche High School have expressed their gratitude to all those who donated towards the project.

Mr Joel Aguko, the Chair of Ongeche Group, is delighted at the development. "Our students now have an opportunity to excel in sciences," he said.

The adjacent pictures were taken during the construction of the science laboratory in July 2009.

In order for the science laboratory to be complete and ready for use by the students, an additional AU\$16,380 is needed. This will go towards plastering, plumbing, painting, fittings (three interior doors and windows) and laboratory equipment purchased and installed. The Ongeche community and the School Board have raised AU\$6,897. The community needs an additional AU\$9483 to complete the science laboratory. In order to raise these funds the Ongeche community and the Ongeche secondary school board have approached the Government of Kenya through the Constituency Development Fund for AU\$5172. They have also approached Piye for AU\$4311. Piye is seeking donations for the completion of this project. The completion of the science laboratory will provide opportunities for the students to excel in sciences and to progress to college or university.



## Dairy Goats Program

Goats enhance the life of the community by providing milk and compost. Development of the Dairy Goats Program was identified by the community as a viable program.

In response to this need, in 2009 the Rotary Club of Maroubra donated funds towards implementing a Dairy Goats Program at Ongeche Village.

The goals of the dairy goat program are:

1. Provide farmers with milk, thereby improving household nutrition.
2. Provide farmers with income through milk sales.
3. Promote improved nutrition for young children in the community.
4. To propagate dairy goat keeping by farmers donating their firstborn female doe to other farmers.

The program began in June 2009. Using services of a local carpenter, the goat shed was constructed and fenced. Similarly a fodder farm was fenced, ploughed, and some fodder was planted. Five dairy goats, four female and one male, were bought from registered dairy goat farmers. A number of implements related to goat keeping were also bought.



The program was approved by the Ministry of Livestock Development and was officially opened on 18 July 2009. Attendees at the opening ceremony were: Dr. Francis Matete (co-founder), Mr Joel Aguko (Chairman Ongeche Group), his executive committee, Rev. Elly Ondiko of the Ongeche Anglican Church, the divisional livestock officer, area chief and members of Ongeche Group as well as representatives from five other communities interested in starting dairy goat programs.

Piye donated funds to support Mr Oyoo (a community member) to undergo training in animal husbandry at the Community Rehabilitation and Environment Programme (CREP) in Awasi, Kenya. Due to unforeseen circumstances, Mr Oyoo was unable to continue his duties in caring for the goats after four months of employment. This led the community to transfer the goats to a reputable dairy goat farmer, Mrs. Eunice Atieno Okech, for safe care. This is a temporary measure pending training and deployment of two new goat keepers.

The four female goats delivered in December 2009 and are now all producing milk. The milk is being sold and milk sales amounts to Ksh. 4,800 per month (AU\$83). Mrs Okech receives payment of Ksh. 3,500 per month (AU\$61) and the donation of one goat, to care for the goats while Ksh. 1,300 per month (AU\$22) is used to purchase feed and supplies.

Following an impact assessment conducted by the founders, it was identified that an additional 28 goats would need to be purchased. The community is in the process of developing a quote for the purchase of the

additional 28 goats, including training for local farmers. Twelve farmers have approached Piye to sponsor their training and expansion of the program. Piye and the Ongeche community thank the Rotary Club of Maroubra for the donation that enabled the development of this project. Further donations towards the expansion of this program are welcome.

## Student Sponsorship

Piye supporters in New Zealand have sponsored eight students from Ongeche Primary School and Ongeche High School since 2008. This sponsorship program was co-ordinated by the Piye New Zealand board of directors. This sponsorship covered school supplies, school uniform, medical expenses and lunch. These children would not have been able to continue their schooling without the generous support provided by our New Zealand members. Piye and the Ongeche community sincerely thank our sponsors.

Piye is no longer enrolling new students for this sponsorship program. The four remaining students in this program will be supported by their respective sponsors until they complete their studies. The future goal of this project is to register students in Kenya with child sponsorship organisations which have a larger administrative capacity.

We thank our New Zealand board for their generous support.

CURRENTLY SPONSORED	PREVIOUSLY SPONSORED
 Beatrice – standard 8 (year 8)	 Grace – standard 5 (year 5)
 Jane – form 4 (year 12)	 Ignatius – standard 5 (year 5)
 Joab - form 4 (year 12)	 John – standard 7 (year 7)
 Miriam - form 4 (year 12)	 Rosemary – standard 7 (year 7)

## Books for Ongeche Primary School

The Ongeche Primary School does not have a library building and is in short supply of books and study materials. In response Piye donated a set of textbooks to the Primary School. The books were donated by Dr Francis Matete, a former student of Ongeche Primary School.

The books were received by the Ongeche Primary School Principal, Mrs Rosemary Oyoo. Piye would like to support the purchase of additional books. To purchase eight text books per student for one class of 40 students, a total of AU\$4000 is required. Donations towards this project are welcome.

## Donation of Chairs and Tent

In 2008, Piye New Zealand donated 100 heavy-duty plastic chairs and a tent. These are for use during community meetings and are available for hire by other communities. Previously community meetings were held in the open, with no shelter to protect from the rain. The chairs and tents provide for a better environment for community meetings. The Ongeche community are very grateful for this gift.



## ACTIVITIES WITHIN AUSTRALIA

During 2008-2009, Piye has embarked on a number of activities to help develop the organisation.

## Strategic Planning

In October 2009, Ms Ann Porcino of RPR Consulting conducted a workshop with Piye founders, board members and advisors. Using a photo-language technique, the group reflected on the mission and vision of Piye and together developed the 2010-2015 Strategic Plan. Concepts explored include our competency, methodology and core objectives. One of Piye's unique aspects is the organisation's needs assessment methodology which focuses on joint planning, demonstrating mutual respect between parties and an approach that is culturally based.

It was agreed that, where possible, Piye would acknowledge and use technical expertise available in Kenya. This promotes respect and opportunities for local people to use and build their skills. Therefore, Piye will only use expatriate skills in the unlikely event that someone with the required skills cannot be found locally. A key component of the plan recognises the value of partnership and increasing social capital. Therefore, communities we work with are encouraged to contribute towards the development of another community. This generates a culture of expressed gratitude, knowledge sharing and support among communities. These concepts fed into the development of the Piye Strategic Plan.

We would like to thank all those who have devoted their time and effort to contribute towards this important initiative.

## Governance Board Training

In 2009, Heather Thompson of Heather Thompson Consulting conducted a series of two workshops with the Piye Australia board. The training was focused on developing the appropriate governance structure for the organisation. The Board will continue to participate in professional development activities in the future. We acknowledge the positive impact of the workshops on the board members, and thank Heather for the time and effort she put into developing and delivering the workshops.

## Piye-ICMS Partnership

A partnership has been formed between the International College of Management Sydney (ICMS) and Piye. Sheila Owiti and Beryl Matete (Piye advisor) contacted the college event management department in 2009. The college was enthusiastic about supporting Piye's work. The college also saw the opportunity to build their students practical skills in hospitality and event management. They supported Piye by organising a fundraising dinner and talent show. Over 170 people attended the event, held at ICMS in April 2009.

Special thanks goes to Anne-Marie Flynn and her students who planned and co-ordinated the event. Piye also thanks the hospitality students who volunteered their time, the performers for their entertainment, our donors, judges, and guests for their support.

Piye aims to create mutually beneficial partnerships with local colleges and universities. Such partnerships not only raise funds for Piye, but also provide valuable training and experience for students.



## Macquarie University BBQ Initiative

The members of Macquarie University Student Life Christian Group hosted a series of on-campus barbeques to raise funds for Piye. This humble initiative raised a total of AU\$755.55. Piye would like to thank Carl O'Sullivan and his colleagues for their commitment and support.

## Latin Dance and Social Event - Fundraiser

In September 2009, Piye members Monica Salamanca and Jorge Rengifo organised a Latin Dance and Social Even to raise funds for Piye. During the event, Piye supporters had lessons in Salsa and Meringue dance. Special thanks to Latin Motion studio for their support and free use of the dance studio and to Buena Vista Dance Cuban Academy for dance lessons and performances. We would also like to thank Guillermo and Rocio for leading in Meringue, and to Monica and Jorge for their amazing effort in bringing it all together. Your contributions are all sincerely appreciated. A big thank you to our supporters and all who contributed to the success of the Latin Dance and Social Event.

## FUTURE PROJECTS

In addition to the ongoing programs such as expansion of the Dairy Goats Project, completion of the Ongeche High School Science Laboratory, sponsorship of our four students, and developing our organisation, Piye have plans for a Poultry Project which we aim to initiate this year."

## Poultry Program

Plans are in place for a Poultry Project that will see the construction of a poultry shed to house 400 laying hens in Ongeche. Two community members will be trained to manage the project. Eggs will be sold to restaurants and markets in surrounding regions to generate income from the project. It is planned to develop the project such that surplus eggs will be available to students at the local nursery school.

## HOW CAN I HELP?

You may wish to support the work of Piye in the following ways:

- Become a member (AU\$20 one time subscription and \$50 annual membership fee)
- Become a corporate member (AU\$500+)
- Make a donation
- Become a volunteer
- Initiate and run a fundraising event
- Join one of our sub-committees (marketing, fundraising)
- Donate products, services or any other in-kind gifts to go into future raffles and auction events.
- Provide administrative assistance.

## SPECIAL THANKS

We are very proud of the progress we have made to date. We thank our members, supporters and volunteers for your encouragement and acts of generosity. Thank you for journeying with us. We look forward to your continued support.

- Ms Meylia Setyawati
- Ms Wendy Chen
- Ms Venus Amoro
- Ms Clementina Velasco
- Ms Ann Porcino
- Ms Christine Saleh
- Ms Heather Thomson
- Ms Shehana Mohammed
- Dr Peter Chen
- Ms Val Longmire
- Ms Monica Salamanca
- Ms Jessica Shugart
- Mr Jorge Rengifo
- Student Life – Macquarie University
- Mr Peter Edignton
- University of Wollongong - Sydney
- Business School
- Ms Heather Cartini
- International College of Management, Sydney
- Ms Beryl Ajowi Matete
- Nipplus Systems
- Ms Meylia Abu-gazeleh
- Rotary Club of Maroubra
- Mr Jonathan Longmire
- Ms Sheila Matete-Owiti
- Dr Francis Matete
- Mrs Naomi Matete
- Ms Pauline Muscat
- Mr David Guillaume
- Mr Wycliffe Owiti
- Ms Kerrie Guillaume
- Ms Alexandra Croyle
- Prof John Glynn
- Rotary Club of Fairy Meadow
- Rotary Club of Corrimal
- Rotary Australia World Community Service (RAWCS)
- Balgownie World Travel
- Karen Clover

## THANK YOU TO OUR CORPORATE SPONSOR



### **Bronze Financier**

Nipplus Systems Pty Ltd  
<http://www.nipplus.com>

**NIPPLUS SYSTEMS** core business is building browser based systems that handle complex accounting transactions with ease. Bringing together solutions based on emerging technologies, Nipplus Systems' focus is to bridge the gap between PC based enterprise systems and data driven web and browser based accounting systems.

Piye recommend Nipplus Systems for your software and consulting needs.

Contact Details.

Tel: +61 2 8882 9588

Fax: +61 2 8088 7113

### **HEATHER THOMSON DEVELOPMENT CONSULTING**

Heather Thomson is a development specialist with skills in governance and program monitoring.



**OZ-VISION** studio will bring your marketing projects to life, developing cutting edge solutions and outstanding results. We are friendly and professional; skilled at designing websites, logos, brochures, press ads, corporate stationery, letterbox mailouts and much more. Give Oz-Vision Studio a call today for competitive rates and great service.  
Christine Saleh - 0422 140 593. [oz-vision@mail.com](mailto:oz-vision@mail.com)



**IDESIGNS** *Identifying designs and specialising in graphic design.* Contact Shez 0410 602 786



**Piye Incorporated**

GPO BOX Q952

QVB - SYDNEY, NSW, Australia 1234

Telephone: +61(0) 450 609 410

Email: [info@piye.org.au](mailto:info@piye.org.au)

Web: [www.piye.org.au](http://www.piye.org.au)